

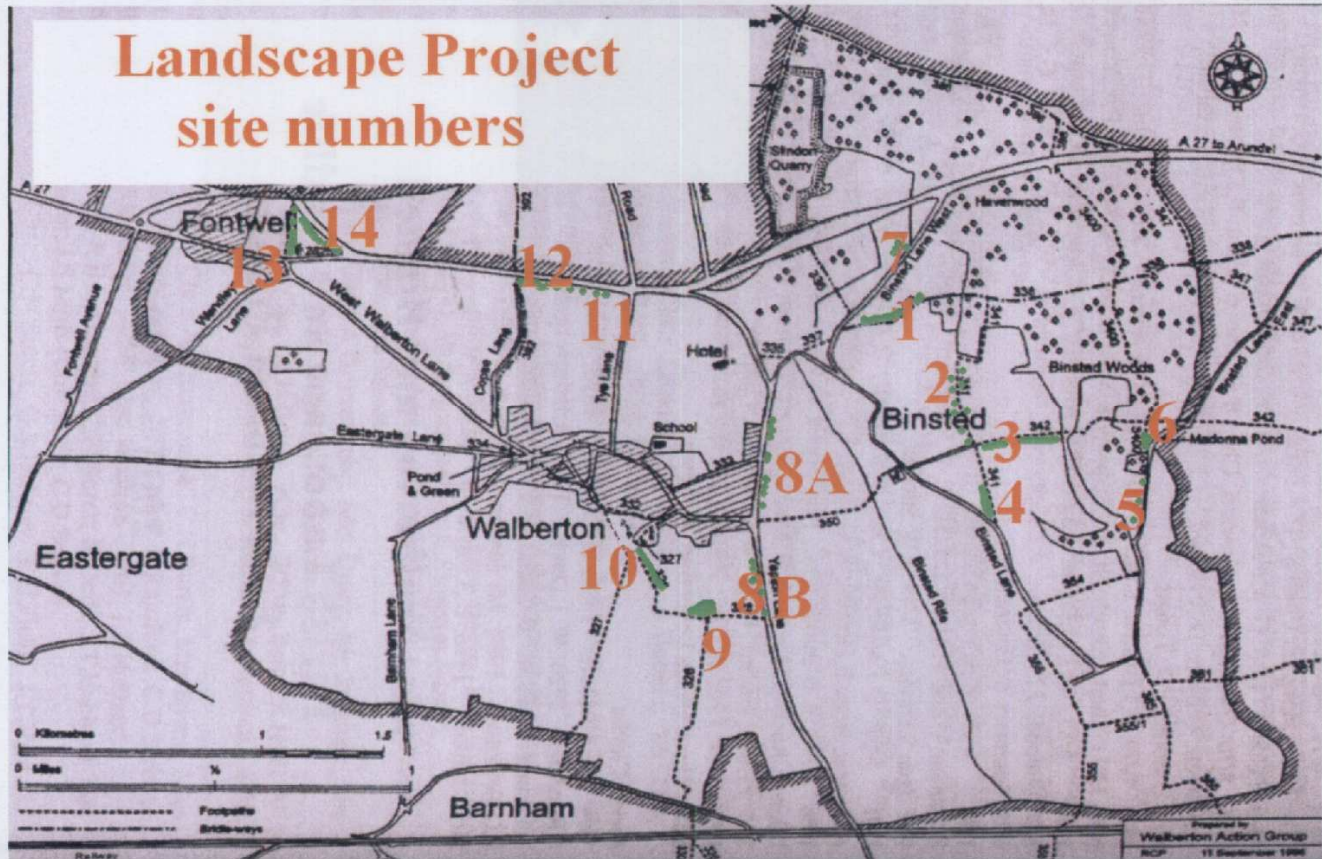
**Walberton Action Group**  
with **SITA Environmental Trust**  
and the International Tree Foundation



**Walberton and Binsted**  
**Parish Landscape and Wildlife**  
**Enhancement Project**

**2003 — 2006**

# Landscape Project site numbers



## Where the project sites are:-

### **Binsted**

1. Old Scotland Lane footpath, Binsted
2. Footpath north of Church Lane, Binsted
3. Church Lane (footpath), Binsted
4. Footpath through Mill Ball Field, Binsted
5. Footpath east of The Park, Binsted
6. Madonna Pond, Binsted
7. Sandyhole Pond, Binsted

Hedge planting  
Tree planting  
Hedge planting with hedgerow trees  
Hedge planting with hedgerow trees  
Tree planting  
Survey, removal of invasive weed, log bench  
Survey

### **Walberton & Fontwell**

8. Yapton Lane, Walberton
9. Lazy W Pond, Walberton
10. Footpath south of St Marys Walberton
11. Verge of A27 west of Tye Lane
12. Verge of A27 east of Copse Lane
13. Footpath in NT Triangle Field, Fontwell
14. Verge of A27, NT Triangle Field, Fontwell

(A) Replanting hedgerow gaps,  
(B) creating footpath and restoring flint wall  
Survey, tree planting, log bench  
Tree planting  
Tree planting  
Hedge planting  
Hedge planting  
Tree planting

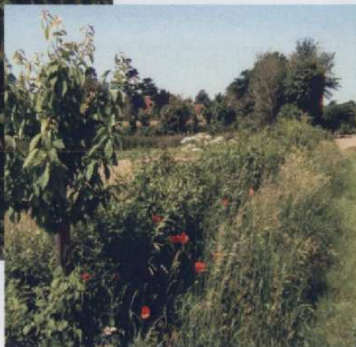
# Hedge Planting

## Church Lane foot-path (Site 3).

About 270 metres planted with hawthorn, blackthorn,



buckthorn, dogwood, guelder rose, spindle, hazel. Oak and wild cherry/ bird cherry planted at intervals in tubes to form hedgerow trees.



Walberton Guides helped plant this hedge.

# Hedge Planting

## Mill Ball Field (Site 4).

About 100 metres planted with hawthorn, blackthorn, spindle, guelder rose, wild privet, buckthorn and hazel, with some holm oak trees.



The hedge defines the footpath and in so doing restores the ancient landscape: a hedge with trees along this line was shown on a 16th century map.



# Hedge Planting

## Yapton Lane (Site 8A)



About 100 metres of gaps were planted up in this hedge with hawthorn,

blackthorn and guelder rose, to maintain this landscape feature and the value of the hedge as a shelter and corridor for wildlife.

---

## Verge of A27 East of Cope Lane (Site 12)

About 80 metres of hawthorn were planted which will improve noise and visual screening for Cope Lane and the village.



# Hedge Planting

**National  
Trust  
Triangle  
Field,  
Fontwell  
(Site 13).**



About 200 metres was planted using hawthorn, blackthorn, spindle, wild privet and field maple, protecting a broad path.

# Tree Planting

**Verge of A27 with National  
Trust Triangle Field, Fontwell  
(Site 13).**

A shelter belt about 250 metres long was planted with holly, hazel, blackthorn, oak, beech, field maple, to screen noise and enhance the landscape.



# Tree Planting

## **Verge of A27 west of Tye Lane (Site 11).**

About 30 trees were planted to continue the existing tree line from Tye Lane along the A27, using oak, field maple, wild cherry and bird cherry

.....



## **Track east of The Park, Binsted (Site 5).**

About 12 trees were planted, and some existing oak seedlings protected, using oak, ash, wild cherry and bird cherry. Provides succession for the huge old oak trees which had been selected out from woodland to grace the Park.

The population of Binsted was photographed under these at Queen Victoria's Jubilee.



# Tree Planting

## Footpath north of Church Lane, Binsted (Site 2).

18 trees were planted in tubes next to a species-rich hedge, renewing a line of oak and elm trees which have mostly disappeared over the last 40 years. Includes oak, ash, wild cherry, bird cherry.



# Tree Planting

## Footpath south of St Mary's Church Walberton (Site 10).

About 200 trees were planted to form a shelter belt. This will grow up to eventually replace the decaying macrocarpas which line this edge of the ha-ha'd Walberton Park.

A lot of holly were planted as their ever-green foliage would be in keeping, also field maple, oak, hawthorn, beech, and a few horn-beam and poplar.



# Ponds

## Madonna Pond, Binsted (Site 6).

An ecological survey was carried out and following that a large quantity of invasive weed (parrot's feather) was removed, and a log bench was provided.





# Ponds

## Lazy W Pond, Walberton (Site 9).

Some dead elms next to the pond and footpath were felled and replaced with 12 trees (oak, alder, ash).



An ecological survey of the pond was carried out which found the presence of the nationally rare Great Crested Newts, and a log bench was provided.



# Flint walls

## Yapton Lane, Walberton (Site 8B).

This former estate boundary wall along Yapton Lane stands at the gateway to the village. It defines the village as part of the downland area where flints picked off the fields were traditionally used in building. It was under threat of ruin due to theft of the attractive half-round capping bricks whose mortar was now soft, and consequently the rain getting into the structure (as well as the ivy).





---

### **Sandyhole Pond, Binsted (Site 7).**

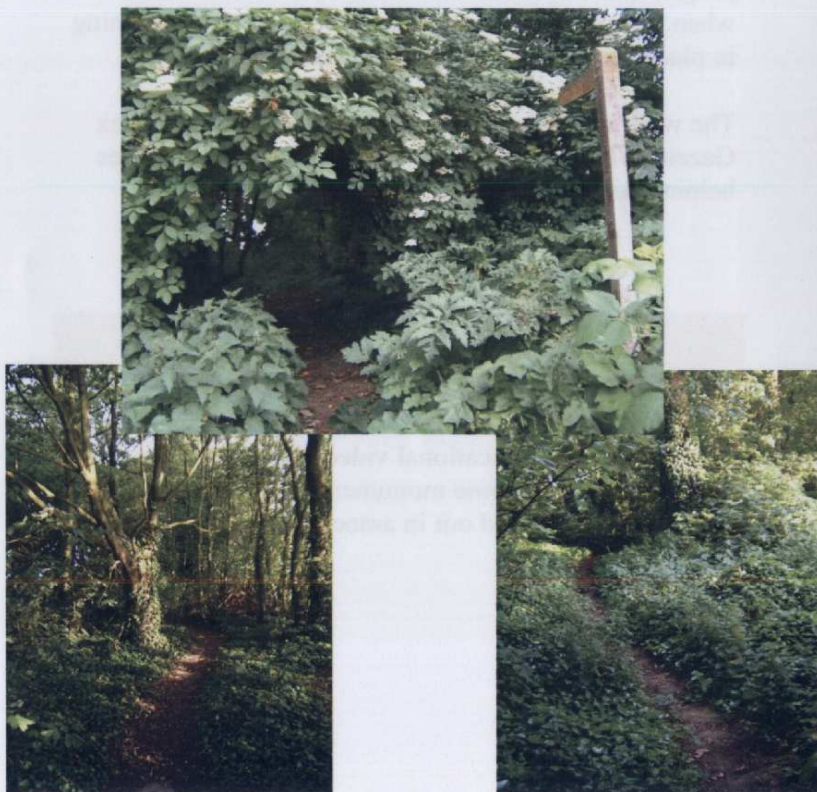
An ecological survey of the pond was carried out. The pond is dominated by the invasive water weed 'water soldier' and a future project may aim to remove this to allow more wildlife to feed and breed in the pond.



# New footpath

## Yapton Lane, Walberton (Site 8B).

This footpath was created by within the Shaw the other side of the flint wall seen opposite, to allow safe passage off Yapton Lane along to footpath 328, making an attractive circular walk accessible to the village again.





## Related activities

During the period of the project WAG has had talks on environmental topics from wildlife gardening to the life of bats.

Several guided walks have been held to see the work in progress, and notices have been in place on the sites when the work was being done (and typically remaining in place for at least 6 months afterwards).

The work being done was featured in the West Sussex Gazette with an article and a photograph of the guides helping with the planting.

## Local Heritage Initiative

A grant was obtained from this source which funded production of an educational video about local heritage, also restoration of some monuments in the churchyard. The work was carried out in association with the village primary school.

## Hedgerow Survey

WAG was among the first parish groups to carry out a Phase 1 Habitat Survey. During this period the Sussex Wildlife Trust asked for parish groups to survey the woody species growing in hedges and their condition. WAG was the first community group to survey all of ours.

We have also gone on to survey the flowers in the base of selected hedgerows. A WAG group has also surveyed the flora of Walberton church-



## Churchyard flora Survey

yard in conjunction with a new wildlife-friendly mowing regime for 'God's acre'.



# More information

## Walberton Action Group

Started in 1995. Guided Walks, Booklets & Leaflets, Maps, Community & Environmental Surveys, Rights of Way, Local transport & other interests.

*Chairman* P Brown: peterjbrown@tesco.net  
*Secretary* E Tristram: emma.tristram@dsl.pipex.com  
*Website* www.walbertonag.org.uk

## WAG Conservation Committee

Peter Brown, Martin Bond, John Heathcote, Christine Llewellyn, Jan Wood, Mike & Emma Tristram

*Project Co-ordinator for this Landscape Project*  
Mike Tristram: mike.tristram@dsl.pipex.com

## Thanks are due to

- **SITA Environmental Trust** who provided a £35,000 grant for this project (of which we spent all but £26.25).
- The **International Tree Foundation** who provided the initial £2,500 contribution to start this project.
- Other **donors** to this project: Binsted & Walberton Nurseries (£1,104.95) and Mr & Mrs Hester (£90).
- The **landowners**: Luke Wishart for Church Farm Binsted (sites 1,2,3,5,6,7,8A), Binsted Nursery (site 4), Colin Caldwell (site 8B), Bill Forse and the Church Commissioners (site 9), Simon and Nicky Hester (site 10), Michael Langmead (sites 11, 12), the National Trust (sites 13,14)
- Our **contractors**: Andrew Cossar of Pro-Forest (planting trees and hedges), Mark Middleton of Berry-Middleton (flint walls), Colin Porter (flint wall), John Bentley (tree felling), Steven & Paul Humphrey (pond clearance), Barry Kemp (ecological survey).
- Our **members**, local residents who love this place and make it all happen.

